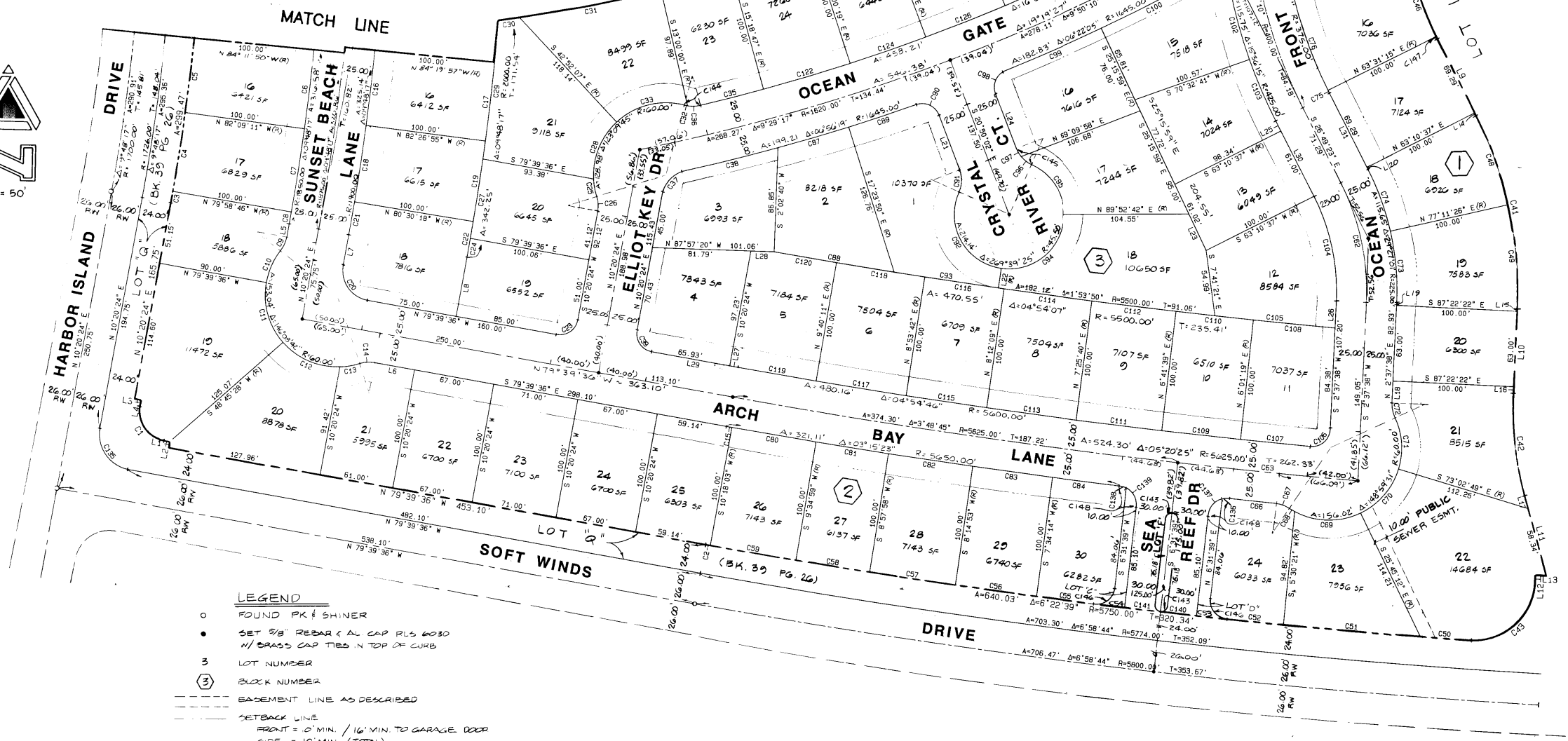
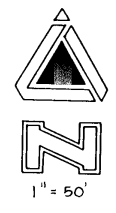


LA JOLLA CLASSICS

A PORTION OF
THE SW1/4 OF SECTION 16 AND THE NW1/4 OF SECTION 21,
TOWNSHIP 20 SOUTH, RANGE 60 EAST, M.D.M.,
CITY OF LAS VEGAS, CLARK COUNTY, NEVADA.

CURVE DATA					CURVE DATA					CURVE DATA				
CURVE	ARC	DELTA	RADIUS	TAN LENGTH	CURVE	ARC	DELTA	RADIUS	TAN LENGTH	CURVE	ARC	DELTA	RADIUS	TAN LENGTH
C1	39.27	90°00'00"	25.00	25.00	C55	45.95	0°29'38"	5750.00	24.78	C109	67.95	0°42'28"	5500.00	33.97
C2	3.92	0°02'21"	5750.00	1.96	C56	67.99	0°40'39"	5750.00	34.00	C110	64.51	0°40'19"	5500.00	32.26
C3	9.76	0°19'10"	1750.00	4.88	C57	72.05	0°43'51"	5750.00	36.03	C111	71.70	0°44'01"	5500.00	35.95
C4	66.39	0°10'29"	1750.00	33.20	C58	61.90	0°37'51"	5750.00	30.95	C112	70.42	0°44'01"	5500.00	35.41
C5	62.43	0°02'38"	1750.00	31.02	C59	72.05	0°43'50"	5750.00	36.03	C113	75.72	0°45'29"	5500.00	37.86
C6	66.39	0°02'38"	1850.00	33.00	C60	117.39	0°06'33"	298.76	60.00	C114	74.36	0°46'29"	5500.00	37.18
C7	75.19	2°10'25"	1850.00	36.10	C61	43.39	6°12'57"	400.00	21.72	C115	87.69	0°41'33"	5500.00	33.95
C8	19.31	0°19'10"	1850.00	5.18	C62	110.90	29°27'51"	298.76	60.00	C116	66.48	0°41'33"	5500.00	33.24
C9	12.25	28°04'21"	25.00	5.25	C63	150.00	1°31'40"	5650.00	75.00	C117	75.72	0°46'29"	5500.00	37.86
C10	29.80	28°27'23"	60.00	15.21	C64	23.71	90°32'58"	15.00	15.14	C118	74.36	0°46'29"	5500.00	37.18
C11	53.61	51°11'55"	60.00	28.75	C65	34.40	0°13'53"	6650.00	14.70	C119	65.52	0°40'13"	5500.00	32.76
C12	53.29	50°53'23"	60.00	28.65	C66	12.16	27°52'28"	25.00	6.20	C120	52.45	0°32'41"	5500.00	26.83
C13	16.34	15°36'01"	60.00	8.22	C67	12.16	27°52'28"	25.00	6.20	C121	70.25	2°41'32"	1495.00	35.13
C14	12.25	28°04'21"	25.00	6.25	C68	5.38	0°02'48"	60.00	2.64	C122	74.95	2°41'32"	1495.00	37.48
C15	3.95	0°02'21"	5650.00	1.92	C69	56.81	54°15'12"	66.00	30.74	C123	62.33	2°23'20"	1495.00	31.17
C16	62.47	1°53'02"	1900.00	31.24	C70	49.53	47°17'38"	66.00	26.27	C124	66.90	2°23'20"	1595.00	33.26
C17	65.76	1°53'02"	2000.00	32.98	C71	44.40	47°23'53"	66.00	23.27	C125	66.29	2°32'28"	1495.00	33.15
C18	64.46	1°56'38"	1900.00	30.23	C72	12.25	28°04'21"	25.00	6.25	C126	70.72	2°32'28"	1595.00	35.37
C19	67.82	1°56'38"	2000.00	33.93	C73	66.02	15°26'12"	225.00	36.49	C127	70.25	2°41'32"	1495.00	35.13
C20	39.27	90°00'00"	25.00	25.00	C74	55.03	14°00'49"	225.00	27.62	C128	74.95	2°41'32"	1595.00	37.48
C21	28.02	0°50'42"	1900.00	14.51	C75	2.25	0°20'38"	375.00	1.13	C129	62.33	2°23'20"	1495.00	31.17
C22	29.49	0°50'41"	2000.00	14.75	C76	83.19	12°54'55"	375.00	40.26	C130	66.51	2°23'21"	1595.00	33.26
C23	23.56	90°00'00"	25.00	23.56	C77	36.10	7°17'17"	281.78	18.07	C131	119.78	4°25'25"	1495.00	59.82
C24	15.25	0°26'13"	2000.00	7.63	C78	32.60	4°58'53"	375.00	16.31	C132	132.18	2°59'16"	425.00	11.98
C25	15.15	14°27'55"	60.00	7.63	C79	36.10	7°17'17"	281.78	18.07	C133	15.71	90°00'00"	15.00	8.68
C26	12.25	28°04'21"	25.00	6.25	C80	70.90	0°43'50"	5650.00	35.40	C134	50.32	1°48'27"	1495.00	25.16
C27	67.02	1°55'12"	2000.00	33.51	C81	60.83	0°37'51"	5650.00	30.41	C135	47.12	90°00'00"	30.00	30.00
C28	52.78	3°23'54"	60.00	28.23	C82	70.90	0°43'50"	5650.00	35.40	C136	4.23	90°00'00"	15.00	2.51
C29	115.41	3°18'22"	2000.00	57.12	C83	66.81	0°40'39"	5650.00	33.41	C137	13.41	70°31'54"	15.00	10.41
C30	18.03	0°41'27"	1495.00	9.01	C84	58.00	0°55'71"	5650.00	24.00	C138	4.23	90°00'00"	15.00	2.51
C31	119.34	4°34'22"	1495.00	59.70	C85	23.71	90°32'58"	15.00	15.14	C139	15.40	70°31'54"	15.00	10.41
C32	2.15	4°50'31"	25.00	1.08	C86	61.03	2°07'38"	1645.00	30.52	C140	30.00	0°17'38"	5750.00	15.00
C33	61.05	58°17'52"	60.00	33.46	C87	101.00	1°03'59"	5650.00	50.50	C141	30.00	0°17'38"	5750.00	15.00
C34	60.25	2°18'57"	1495.00	30.19	C88	59.02	0°23'21"	1645.00	29.52	C142	8.81	180°00'00"	2.50	9.41
C35	54.26	1°56'57"	1595.00	27.13	C89	59.02	0°23'21"	1645.00	29.52	C143	14.14	180°00'00"	2.50	9.41
C36	15.41	23°52'27"	25.00	5.28	C90	23.00	105°44'30"	15.00	14.61	C144	12.50	278°17'38"	25.00	6.42
C37	29.30	67°28'44"	25.00	16.59	C91	19.76	44°49'43"	15.00	10.11	C145	14.14	180°00'00"	2.50	9.41
C38	79.16	2°45'26"	1645.00	39.59	C92	83.97	105°44'30"	45.50	60.10	C146	14.14	180°00'00"	2.50	9.41
C39	23.56	90°00'00"	25.00	23.56	C93	67.43	0°54'39"	5650.00	43.72	C147	1.65	90°00'00"	275.00	0.22
C40	143.82	29°29'27"	275.00	73.65	C94	78.12	0°52'29"	45.50	52.69	C148	23.44	89°52'52"	15.00	4.66
C41	167.05	29°27'21"	325.00	86.41	C95	52.05	0°52'29"	45.50	29.29	C149	23.44	89°52'52"	15.00	4.66
C42	86.39	18°00'00"	275.00	43.56	C96	11.36	28°02'02"	25.00	5.78	C150	4.23	90°00'00"	15.00	2.51
C43	80.46	90°11'11"	275.00	40.23	C97	8.20	18°47'38"	25.00	4.14	C151	15.40	70°31'54"	15.00	10.41
C44	23.91	4°58'53"	275.00	11.96	C98	23.20	68°37'59"	15.00	14.64	C152	15.40	70°31'54"	15.00	10.41
C45	36.82	12°15'21"	275.00	20.52	C99	87.82	3°03'17"	1645.00	43.60	C153	15.40	70°31'54"	15.00	10.41
C46	55.14	12°24'15"	275.00	28.98	C100	95.21	3°18'58"	1645.00	47.62	C154	15.40	70°31'54"	15.00	10.41
C47	1.65	0°20'38"	275.00	0.83	C101	28.11	107°21'50"	15.00	20.41	C155	15.40	70°31'54"	15.00	10.41
C48	79.49	14°00'49"	325.00	39.54	C102	11.10	8°14'11"	425.00	30.66	C156	15.40	70°31'54"	15.00	10.41
C49	87.56	13°24'15"	325.00	44.05	C103	54.85	7°22'24"	425.00	27.36	C157	15.40	70°31'54"	15.00	10.41
C50	41.05	0°24'33"	5750.00	20.53	C104	89.96	29°27'51"	175.00	45.98	C158	15.40	70°31'54"	15.00	10.41
C51	113.14	1°50'31"	5750.00	56.61	C105	100.00	1°32'50"	5650.00	50.00	C159	15.40	70°31'54"	15.00	10.41
C52	47.37	0°28'13"	5750.00	23.68	C106	24.36	92°48'50"	15.00	15.73	C160	15.40	70°31'54"	15.00	10.41
C53	25.15	0°15'52"	5750.00	12.57	C107	67.12	0°42'28"	5650.00	33.97	C161	15.40	70°31'54"	15.00	10.41
C54	25.15	0°15'52"	5750.00	12.57	C108	67.12	0°42'28"	5650.00	33.97	C162	15.40	70°31'54"	15.00	10.41

LINE	BEARING	DISTANCE
L1	N 10°20'24" E	5.00
L2	N 79°39'36" W	5.00
L3	N 10°20'24" E	5.00
L4	N 79°39'36" W	5.00
L5	S 10°20'24" N	10.75
L6	S 79°39'36" E	33.96
L7	N 10°20'24" E	25.75
L8	S 10°20'24" N	56.75
L9	S 26°48'23" E	71.29
L10	S 2°37'38" W	70.00
L11	S 10°20'24" N	69.46
L12	N 88°14'06" W	10.00
L13	S 2°37'38" W	5.37
L14	S 26°48'23" E	2.00
L15	S 2°37'38" W	1.74
L16	S 2°37'38" W	5.26
L17	S 15°22'22" E	11.12
L18	N 2°37'38" E	18.20
L19	N 2°37'38" E	1.74
L20	N 26°48'23" W	2.00
L21	S 20°50'02" E	48.26
L22	S 8°15'11" N	16.50
L23	S 25°15'59" E	33.55
L24	N 20°50'02" W	48.26
L25	S 26°48'23" E	12.29
L26	S 2°37'38" W	22.82
L27	N 79°39'36" W	7.36
L28	S 26°48'23" E	19.27
L29	N 79°39'36" W	73.10
L30	S 26°48'23" W	71.29



- LEGEND**
- FOUND PK & SHINER
 - SET 3/8" REBAR @ ALL CAP PLS 6030 N/ BRASS CAP TIES IN TOP OF CURB
 - 3 LOT NUMBER
 - ③ BLOCK NUMBER
 - BASEMENT LINE AS DESCRIBED
 - - - - - SETBACK LINE
FRONT = 0' MIN. / 10' MIN. TO GARAGE DOOR
SIDE = 10' MIN. (TOTAL)
 - C7 CURVE NO.
 - L3 LINE ANNOTATION NO.

ALCA
ENGINEERING & SURVEYING, INC.
CIVIL ENGINEERING & LAND SURVEYING
17071 878-3558